

# MONTHLY MEMBERSHIP PROGRESS REPORT

LOCATION HAWAII

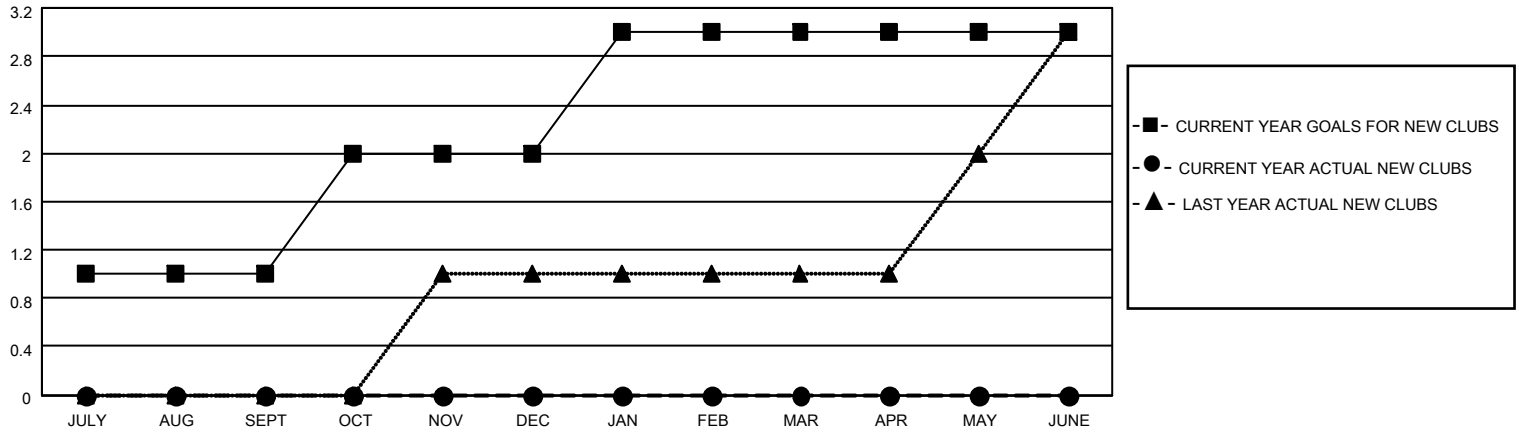
District 50

Results as of: 5/31/2023

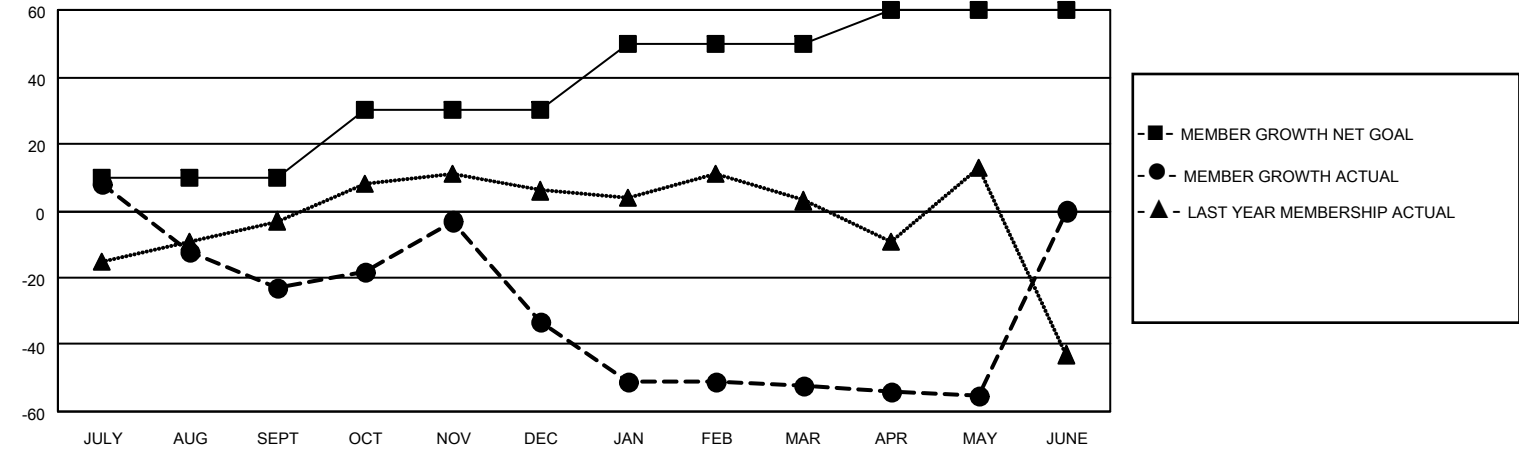
Clubs			
RESULTS FOR 2022-2023			
QUARTER	NEW CLUB GOAL	NEW CLUBS	DROPPED CLUBS
JULY/AUG/SEPT	1	0	0
OCT/NOV/DEC	1	0	2
JAN/FEB/MAR	1	0	0
APR/MAY/JUNE	0	0	0

Members			
RESULTS FOR 2022-2023			
QUARTER	MEMBER GROWTH NET GOAL	MEMBER GROWTH ACTUAL	DROPPED MEMBERS ACTUAL (including transfers)
JULY/AUG/SEPT	10	49	62
OCT/NOV/DEC	20	59	63
JAN/FEB/MAR	20	38	50
APR/MAY/JUNE	10	15	14

**GOALS AND ACTUAL NEW CLUBS CUMULATIVE**



**GOALS AND ACTUAL MEMBERS CUMULATIVE**



DROPPED CLUBS: 2	
<u>DROPPED MEMBERS</u>	
DECEASED	20
CLUB CANCELLED	12
OTHER	160
<b>TOTAL</b>	<b>192</b>

40 CLUBS OF 57 ADDED 1 OR MORE NEW MEMBERS

[CLICK HERE FOR CUMULATIVE MEMBERSHIP DATA](#)

<u>GENDER DISTRIBUTION</u>	
MALE	811 (54.10%)
FEMALE	687 (45.83%)
NON BINARY	0 (0.00%)
PREFER NOT TO ANSWER	1 (0.07%)
TOTAL FAMILY UNIT MEMBERS	
	277
FAMILY MEMBERS PAYING HALF DUES	
	150